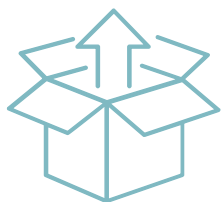


- PLEASE FILL ONLY UP TO THE FILL LINE INDICATED ON THE COLLECTION TUBE. SAMPLE WILL BE REJECTED IF OVERFILLED.
- ENSURE THAT THE SAMPLES ARE LABELED APPROPRIATELY WITH NAME, DATE OF BIRTH AND DATE OF SAMPLE COLLECTION. SAMPLES WITH INSUFFICIENT LABELING WILL BE REJECTED.
- IMMEDIATE SHIPPING OF SAMPLES RECOMMENDED AFTER COLLECTION. DO NOT STORE SAMPLES IN DIRECT SUNLIGHT OR TEMPERATURES ABOVE 18* C.
- WELL FORMED AND DIARRHEAL COMPONENTS OF STOOL ARE RECOMMENDED TO BE COLLECTED TO GUARANTEE RESULT OF ASSAYS. (DIARRHEAL COMPONENTS ARE RECOMMENDED FOR PATHOGEN ASSAYS AND WELL FORMED COMPONENTS ARE RECOMMENDED FOR PROTEOMIC ASSAYS SUCH AS PANCREATIC ELASTASE).



Step 1

Open the kit and spread out the contents.

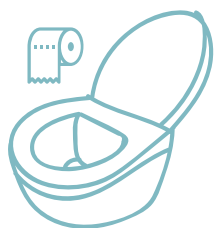
The contents include:

- 1 collection hat (EasySampler)
- 1 pair of disposable gloves
- 1 Para-Pak C&S system (orange top)
- 1 blank identification label



Step 2

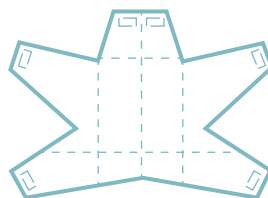
Put on disposable gloves.



Step 3

Lift toilet seat and wipe off the surface of the toilet bowl rim.

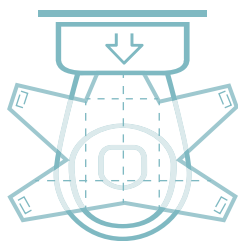
Note: Before affixing the EasySampler to the toilet bowl, bend the paper along the lines for better flexibility.



Step 4

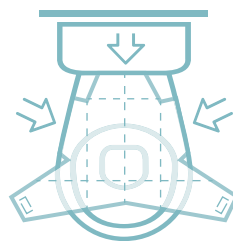
Unfold the EasySampler containing five flaps.

Orient the larger (REAR) flap towards the back of the toilet with the tape side down.



Step 5

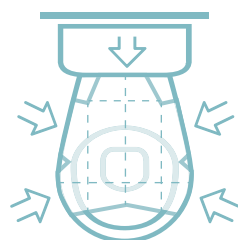
Remove the protective covering from the tape and adhere the REAR flap of the EasySampler onto the back of the toilet rim.



Step 6

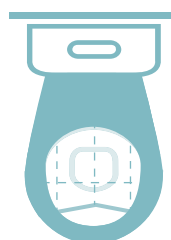
Remove the protective covering from the two MIDDLE flaps and adhere them to the outside of the toilet bowl as far back as possible.

Note: EasySampler should not touch the surface of the water.



Step 7

Remove the protective covering from the two FRONT flaps and adhere them to the outside of the toilet bowl.



Step 8

Make sure the EasySampler is taut and in the shape of a bowl. If not, re-orient the flaps for the correct positioning. Lower the toilet seat once the EasySampler is oriented correctly.



Step 9

Have a bowel movement.

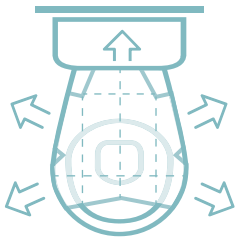
Note: Make sure stool does not come in contact with the toilet water or urine. Slowly drain urine away from bowel movement before collecting a sample if necessary.



Step 10

Collect stool sample **well formed & diarrheal** using the scoop provided which is attached with the cap of the Para-Pak C & S tube (orange top) and add specimen to the fill line.

Note: **DO NOT** dispose of the liquid inside the vials. **Add specimen to the red fill line but do not overfill. Recap the vial and make sure that the container is properly sealed.**



Step 11

Remove EasySampler flaps from toilet bowl and rim. Flush both the EasySampler and excess stool down the toilet.

Note: When using water saving toilets use a full flush. Repeat if necessary.

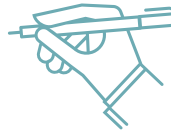


Step 12 (* required)

Label all collection tubes appropriately with your name, date of birth and date of sample collection.

Name _____
Date of birth _____

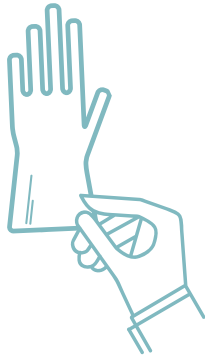
Place ALL sample containers into the biohazard bag with absorbent material and **store at 2-8°C prior to shipment.**



Step 13

Remove gloves and properly dispose of the material.

Wash hands to prevent contamination.



Step 14

Place all documents along with the biohazard bag into the shipping box. Mail the package as soon as possible.

Rejected Sample Criteria

Accepted at fill level	Overfilled	Overfilled or/and Leaking	Containers not accepted